

CANDIDATES FOR RTM

DISTRICT SEVEN - VOTE FOR ANY FOUR

LWV Question: How will you use the 2007 Plan of Conservation and Development of Westport to address the critical needs of your district and the town as a whole?



JACK KLINGE

As Chairman of the RTM Long Range Planning Committee I am totally involved in this project since inception; analytically as well as providing input in meetings. This Plan is most important for the town as we move forward proactively dealing with downtown and neighborhood development, moderate income housing, open space purchase and utilization and more. The key is to actually PLAN not just react, which is the role of our Committee as we work with all town agencies and. We MUST have oversight which has been lacking in the implementation of previous plans. The new plan should be both a set of prioritized objectives as well as a roadmap to reach where Westport should be in ten years. I will help see that this work

is done properly and in a timely and affordable basis. Westporter 1966, RTM ten years, substitute in schools, President Friends of Senior Center, Masters Engineering Cornell and MBA Harvard. Active sea duty USN.



ALLEN BOMES

I will continue to support the critical needs of my district and the town (which are equally important) by working towards maintaining our excellent education system while minimizing tax increases, keeping strong tax abatement and tax deferral programs to protect our seniors, preserving our fine recreation facilities and endorsing other quality of life issues. The Town Plan (which is currently only in draft form) is prepared and implemented by the Planning & Zoning Commission with minimal input from others. Also, it mainly focuses on land use issues over which the RTM has very limited jurisdiction. Therefore, it is doubtful whether the RTM can effectively use the Town Plan to address the critical needs of the town.

Member of the RTM Finance, Parks & Recreation and Long Range Planning Committees, the School Building Committee, Emily Mclaury House Restoration Committee, Westport Little League Director and CFO/Treasurer of First Night.



LISA S. ROME

As an RTM incumbent, I believe Westport's critical needs are similar to those of District 7. Using the 2007 Town Plan, focus should be on:

- Funding open space acquisition and preservation
- Protecting residential neighborhoods
- Addressing long-term needs of Police/EMS/Fire
- Enhancing senior and youth activities
- Developing a plan to reduce traffic congestion/reconfigure parking
- Increasing awareness of historic resources
- Prioritizing needs to maintain a strong educational system and quality of life improvements through prudent fiscal policies

Sixth-term RTM Representative; Deputy Moderator of RTM; Chair Health and Human Services; on Finance, Public Protection, Employee Compensation, Rules and Ethics Committees; Physician; Clinical Instructor in Medicine, Yale; past Fairfield County Board ADL; LWV; Former Board of Directors, Domestic Violence Crisis Center; former WYWL sustainer; past Little League Coach; B.A. M.Ed. Child Study, Tufts



STEPHEN RUBIN

Westport's 2007 Plan of Conservation and Development is just that, a plan. It will be up to all of us including the RTM to address each and every issue over the next many years. It is not a stand alone magic bullet that will automatically serve all needs and wants. I will use it as guide for both reference and direction. Every resident had the opportunity to be part of this plan with help from paid professionals therefore it is a very valuable document and tool that I will not ignore. As each district clearly has individual requirements I would like to think that whatever happens in any part of town results in affecting the wellbeing of all of our great Town of Westport. Thanks to all of you and the LWV and please come out to vote.

CANDIDATES FOR RTM

DISTRICT EIGHT - VOTE FOR ANY FOUR

LWV Question: How will you use the 2007 Plan of Conservation and Development of Westport to address the critical needs of your district and the town as a whole?

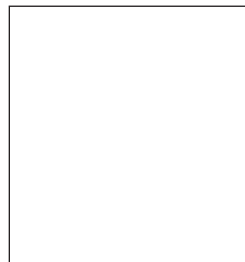


LOIS SCHINE

As a member of the RTM for the past ten years I have participated in numerous discussions regarding the Town Plan. I currently serve on the Long Range Planning, Planning and Zoning, Finance and Rules Committees. The most important feature of the Plan is the Implementation Committee. I have suggested which groups should be represented in that committee and feel that it is most important to create such a body.

The acquisition and protection of Open Space have long been issues which I have been involved in and will continue to be. There is one large tract of land left in private ownership in the district and I have promoted the possibility of town ownership. District 8 is a residential area and needs to remain

as such. Although the traffic issue is a difficult one it is important to be creative in trying to alleviate it.



MICHAEL REA

No response



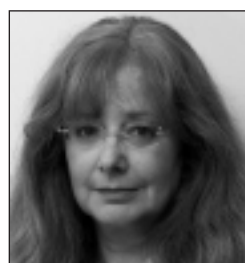
JONATHAN PHILIP STEINBERG

District 8 is primarily residential, so I'm concerned about intensive development. The Town Plan seeks to balance homeowners' rights to build their dream homes with the contrasting desires to maintain the Town's character and avoid overdevelopment. As house sizes and property coverage increase, so do environmental risks. I'll sponsor RTM ordinances requiring septic system maintenance and enhanced conservation of sensitive ecosystems.

More broadly, the Plan endorses efforts to promote downtown Westport as a gathering place for cultural and community activities, not just a shopping destination. Serving on the RTM Long-Range Planning Committee, I will continue to push for a specific and actionable Downtown Plan to be implemented expeditiously.

To preserve Westport's superior educational programs while observing fiscal responsibility, we must explore appropriate budget reform, achievable through improved operational efficiencies.

Jonathan Steinberg: 25-year Westport resident, graduate of Staples High and Yale University. Jonathan and Nancy have three children in Westport schools.



WENDY G. BATTEAU

Good decisions are grounded in good information. The carefully researched Town Plan provides this. Though it can't substitute for frequent dialogue, I will use it as an essential reference and action plan, documenting Westporters' priorities and detailing strategies for preserving the town's distinctive character. District 8 shares the needs we must balance: preserving environment, health, neighborhoods, open space and security; controlling traffic; supporting our storied cultural and recreational assets, inspiring community; creating affordable housing, considering potential impacts; sustaining our excellent education system; maintaining infrastructure. To meet all

challenges I will consider each opinion, research issues, and make fiscally prudent decisions. Background: Create PBS kids' series, books, cd's. Senior Executive, Simon & Schuster and Random House; cofounder Sierra Club Publishing. Volunteer, CES, CMS, PYD, LWV, Hole in the Wall Gang Camp, Nature Conservancy, NRDC, and more. BA Brown, MFA Stanford/SFSU. Husband, Robin Batteau. Son at Staples. 15 year resident.

Why voting for Representative Town Meeting (RTM) candidates is so important!

The citizens of Westport who you vote to represent you on the RTM will:

- * Vote on every town request for appropriations in excess of \$20,000.
- * Vote on final approval of the town budget
- * Write town ordinances
- * Serve on one or more committees that review and make recommendations regarding appropriations and ordinances.